

# PARK VIEW CONDOMINIUMS

## A CONDOMINIUM PLAT JUNEAU COUNTY, WISCONSIN

### SURVEYOR'S CERTIFICATE

I, KENNETH A. VICKER, WISCONSIN REGISTERED LAND SURVEYOR, HEREBY CERTIFY THAT THIS PLAT IS A CORRECT REPRESENTATION OF THE CONDOMINIUM DESCRIBED AND THAT THE DIMENSIONS, DIMENSIONAL SPECIFICATION AND LOCATION OF EACH UNIT AND THE COMMON ELEMENTS ARE CORRECTLY DETERMINED FROM THE PLAT.



623265

Register Office  
Juneau County, Wis.  
Received for Record

JUL 16 2003

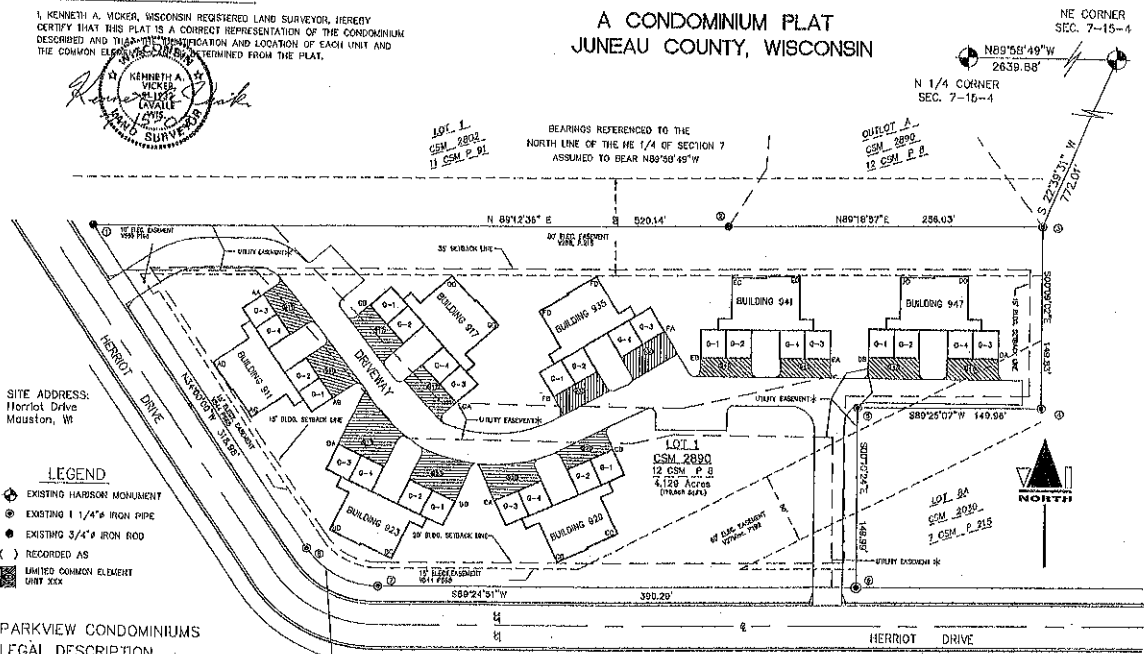
at 11:00 AM  
in the presence of  
Page 2 of 2  
Notary Public

### LOT CORNER COORDINATES

|   |              |             |
|---|--------------|-------------|
| ① | N 155°32'40" | E 487889.35 |
| ② | N 157°08'41" | E 487889.35 |
| ③ | N 158°24'42" | E 487889.35 |
| ④ | N 159°40'43" | E 487889.35 |

### BUILDING CORNER COORDINATES

|    |              |             |
|----|--------------|-------------|
| AA | N 155°32'40" | E 487889.35 |
| AB | N 157°08'41" | E 487889.35 |
| AC | N 158°24'42" | E 487889.35 |
| AD | N 159°40'43" | E 487889.35 |
| AE | N 160°56'44" | E 487889.35 |
| AF | N 162°12'45" | E 487889.35 |
| AG | N 163°28'46" | E 487889.35 |
| AH | N 164°44'47" | E 487889.35 |
| AI | N 166°00'48" | E 487889.35 |
| AJ | N 167°16'49" | E 487889.35 |
| AK | N 168°32'50" | E 487889.35 |
| AL | N 169°48'51" | E 487889.35 |
| AM | N 171°04'52" | E 487889.35 |
| AN | N 172°20'53" | E 487889.35 |
| AO | N 173°36'54" | E 487889.35 |
| AP | N 174°52'55" | E 487889.35 |
| AQ | N 176°08'56" | E 487889.35 |
| AR | N 177°24'57" | E 487889.35 |
| AS | N 178°40'58" | E 487889.35 |
| AT | N 179°56'59" | E 487889.35 |
| AU | N 181°12'60" | E 487889.35 |
| AV | N 182°28'61" | E 487889.35 |
| AW | N 183°44'62" | E 487889.35 |
| AX | N 185°00'63" | E 487889.35 |
| AY | N 186°16'64" | E 487889.35 |
| AZ | N 187°32'65" | E 487889.35 |



SITE ADDRESS:  
Horriot Drive  
Mauston, WI

### LEGEND

- ⊕ EXISTING HARDSON MONUMENT
- ⊙ EXISTING 1 1/4" IRON PIPE
- EXISTING 3/4" IRON ROD
- ( ) RECORDED AS
- ▨ LIMITED COMMON ELEMENT UNIT SKX

### PARKVIEW CONDOMINIUMS LEGAL DESCRIPTION

A PARCEL OF LAND LOCATED IN THE NE 1/4 OF THE NE 1/4 OF SECTION 7, T16N, R4E, BEING LOT 1, JUNEAU COUNTY CERTIFIED SURVEY MAP # 2080, 12 CSM P. 2, CITY OF MAUSTON, JUNEAU COUNTY, WISCONSIN, CONTAINING 4.129 ACRES ±

**CURVE DATA**  
RAD. = 70.00'  
CENT. ANGLE = 68°40'00"  
ARC LENGTH = 63.22' (66.40')  
CHORD BEG. = N82°31'49" W 116.216'00" W  
CHORD END = 66.45'

**\* NOTE:**  
UTILITY EASEMENT TO THE CITY OF MAUSTON DOCUMENT # 023077

NOTE: IN THE FOLLOWING BUILDINGS, 917, 935, 941, AND 947, THE LOWER UNITS, NUMBERS 2 AND 4, HAVE WALKOUT BASEMENTS.

